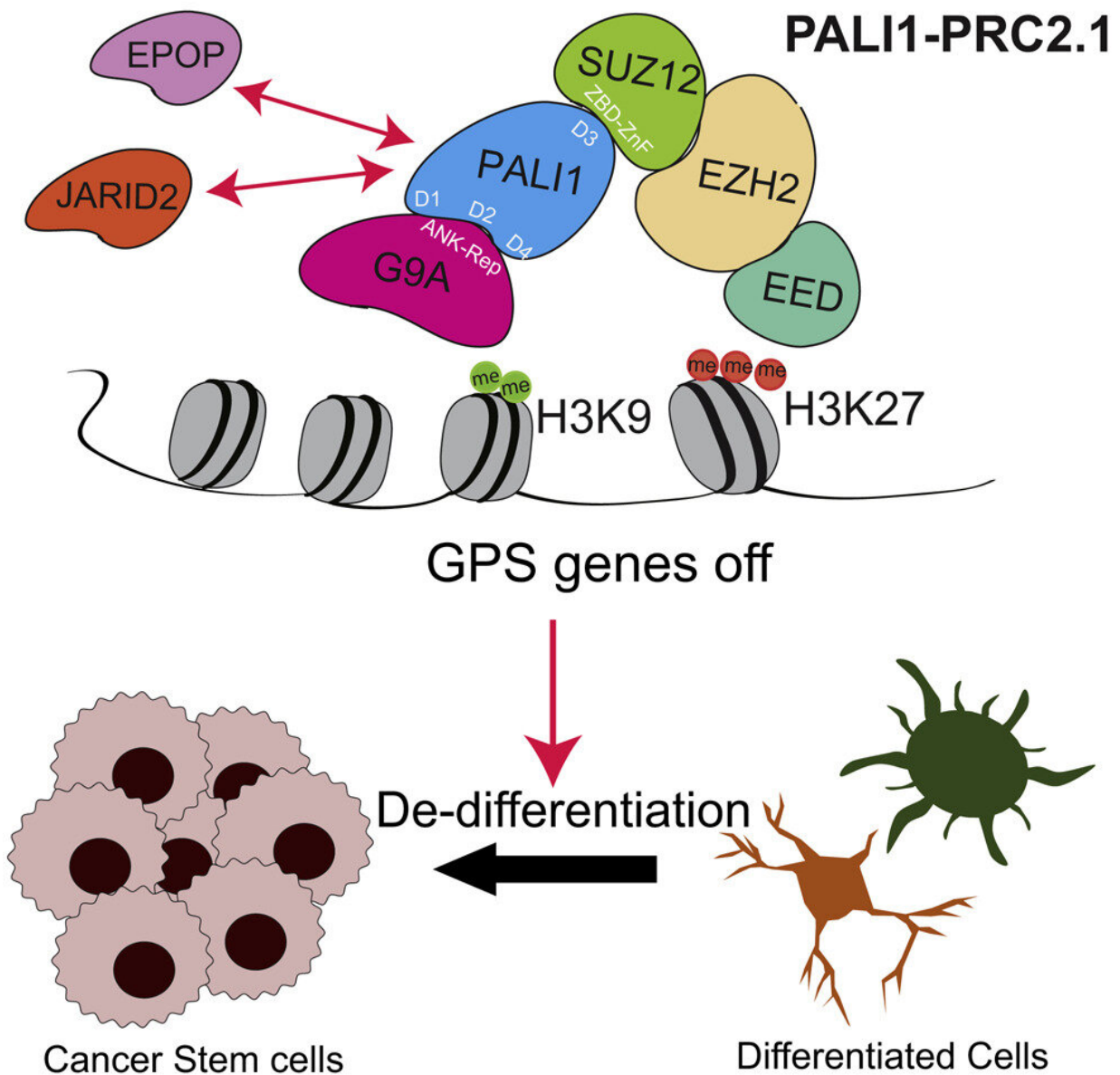


# Study uncovers potential therapeutic approach for advanced prostate cancer

December 21 2022, by Melissa Rohman



PAL11 bridges the interaction between PRC2 (SUZ12/EZH2/EED) and G9A to catalyze dual H3K9 and H3K27 methylation, which leads to strong repression of GPS genes and cell de-differentiation. Credit: *Molecular Cell* (2022). DOI: 10.1016/j.molcel.2022.11.010

A Northwestern Medicine study has discovered that elevated PAL11 in advanced prostate tumors mediates crosstalk between two primary epigenetic silencing mechanisms, suggesting that dual epigenetic inhibition may be an effective therapeutic strategy, according to findings published in *Molecular Cell*.

"Our discoveries of PAL11's critical role in bridging and exploiting two major epigenetic silencing machineries for [gene repression](#) and tumor promotion strongly advocate combinatorial use of their respective pharmacological inhibitors," said Jindan Yu, Ph.D., professor of Medicine in the Division of Hematology and Oncology and senior author of the study.

A distinctive feature of many cancers is uncontrolled growth caused by dedifferentiation, which occurs when differentiated cells forget their identity and regain lineage plasticity. In previous work, PAL11 had been identified as an accessory protein of the Polycomb Repressive Complex 2 (PRC2), which maintains the pluripotency of stem cells by silencing genes essential for [cell differentiation](#).

Core subunits of PRC2 are among the most strongly up-regulated genes in [advanced prostate cancer](#). While several PRC2 genes are currently known to be upregulated in advanced prostate cancer, the role of PAL11, a newly discovered PRC2 accessory protein, had not yet been fully understood.

In the current study, the investigators used co-immunoprecipitation and genome-wide location analysis to identify novel protein interactions and intracellular protein binding mechanisms in metastatic prostate cancer cells and used xenograft models to study gene function in advanced prostate cancer tumors.

They discovered not only that PALI1 was upregulated, but the protein also competes with the JARID2 protein for binding to PRC2 and directly interacts with the G9A [protein](#), driving cell proliferation and invasion.

Notably, PALI1 bridges a unique interaction between PRC2 and G9A proteins, both of which play a role in the epigenetic silencing of a set of genes called G9A-PALI1-SUZ12 (GPS), which are involved in cell differentiation and are suppressed during tumorigenesis.

"PALI1 thus strongly suppresses differentiation genes, induces cancer cell stemness and promotes [tumor growth](#)," said Yu, who is also a professor of Biochemistry and Molecular Genetics and a member of the Robert H. Lurie Comprehensive Cancer Center of Northwestern University.

The loss of GPS genes is associated with poor clinical outcomes, and targeting PRC2 and G9A using complimentary inhibitors may have therapeutic potential, according to Yu.

"Fortunately, the GPS can be rescued through simultaneous targeting of PRC2 and G9A using their respective inhibitors, a therapeutic approach that might benefit a large number of patients with advanced prostate cancer," Yu said.

Moving forward, Yu said her team aims to characterize other critical functions of PALI1 in [prostate](#) cancer and in other cancer types, findings that she said can drive bench-to-bedside translation.

"Our study is the first to dive into the roles of PALI1 in cancer. We are also among the first to study PALI1 in the human setting, as the limited studies on PALI1 are mostly on mouse [embryonic stem cells](#)," Yu said. "We developed reagents for human PALI1 [genes](#) and proteins that will be useful for the investigation of PALI1 in various human diseases."

**More information:** Ka-wing Fong et al, PALI1 promotes tumor growth through competitive recruitment of PRC2 to G9A-target chromatin for dual epigenetic silencing, *Molecular Cell* (2022). [DOI: 10.1016/j.molcel.2022.11.010](#)

Provided by Northwestern University

Citation: Study uncovers potential therapeutic approach for advanced prostate cancer (2022, December 21) retrieved 12 January 2023 from <https://medicalxpress.com/news/2022-12-uncovers-potential-therapeutic-approach-advanced.html>

This document is subject to copyright. Apart from any fair dealing for the purpose of private study or research, no part may be reproduced without the written permission. The content is provided for information purposes only.