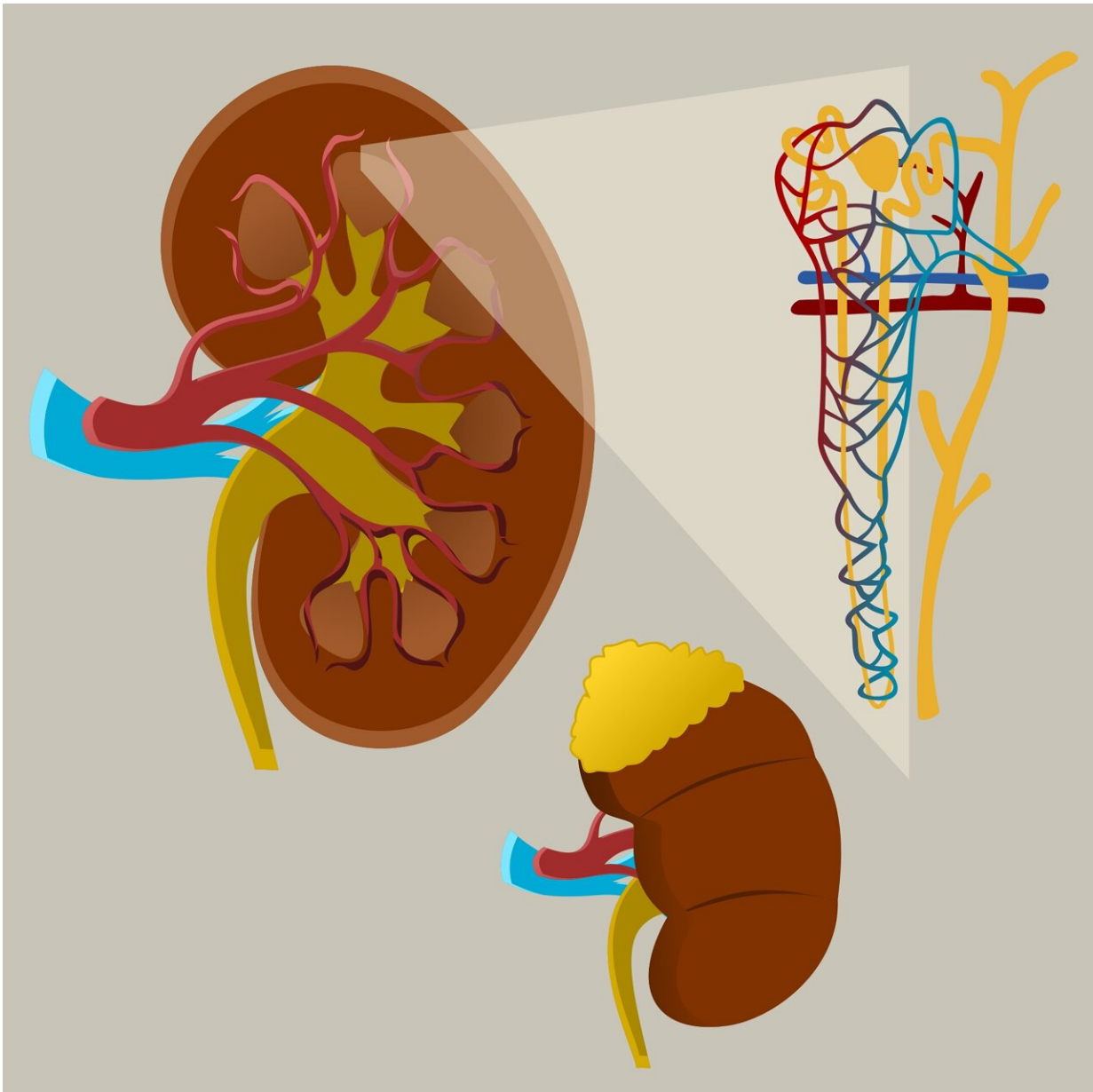


New study indicates that chronic kidney disease is present in one out of ten adults

June 30 2022



Credit: Pixabay/CC0 Public Domain

New results from one of the largest real-world evidence studies of chronic kidney disease (CKD) reveal the high burden of the disease on patients and healthcare systems, with an estimated disease prevalence of 10% of the adult population. Results from the CARDioREnal and METabolic (CaReMe) CKD study were published today in *The Lancet Regional Health—Europe*.

The multinational study of 2.4 million CKD patients across 9 countries in Europe, plus Israel and Canada, estimates the prevalence, outcomes and cost of CKD. While CKD is estimated to be one of the most common diseases affecting one in ten adults, it was found that two out of three patients identified to have CKD in the study were not diagnosed, putting them at high risk of morbidity and mortality and constituting a significant burden on healthcare providers and systems.

Professor Navdeep Tangri, MD Ph.D., Department of Medicine and Community Health Sciences, University of Manitoba, Winnipeg, Canada, said, "To date, estimates of the prevalence, impact and costs of CKD varied widely due to limited studies of the disease. The CaReMe CKD study is one of the largest, longest and broadest studies assessing this chronic disease and adding to the body of evidence for CKD. The results highlight the considerable public health impact of CKD and the importance of early detection and disease management to improve patients' lives and reduce healthcare costs."

Alexander de Giorgio-Miller, Senior Vice President, Global Medical, AstraZeneca, said, "We know there remains significant unmet need in [chronic kidney disease](#), with millions more patients yet to be diagnosed. Real world evidence studies like this are critical to build our

understanding of the gaps in diagnosis and clinical care pathways, and to set ambitious quality standards to give patients better access to medicines with the potential to prevent disease progression, disability and premature death."

CKD is a growing global health burden with increasing contribution to total mortality, and substantial financial costs and impact on healthcare providers. The study found that between 6–9% of patients with CKD die each year, and the leading cause of hospital visits and healthcare costs were CKD events and [comorbidities](#) such as [heart failure](#) (HF). The impact of CKD is expected to rise in the years ahead, with both the total number of CKD cases and costs for managing CKD projected to increase even further.

More information: Johan Sundström et al, Prevalence, outcomes, and cost of chronic kidney disease in a contemporary population of 2.4 million patients from 11 countries: The CaReMe CKD study, *The Lancet Regional Health—Europe* (2022). [DOI: 10.1016/j.lanepe.2022.100438](https://doi.org/10.1016/j.lanepe.2022.100438)

Provided by AstraZeneca

Citation: New study indicates that chronic kidney disease is present in one out of ten adults (2022, June 30) retrieved 16 May 2023 from <https://medicalxpress.com/news/2022-06-chronic-kidney-disease-ten-adults.html>

<p>This document is subject to copyright. Apart from any fair dealing for the purpose of private study or research, no part may be reproduced without the written permission. The content is provided for information purposes only.</p>
--