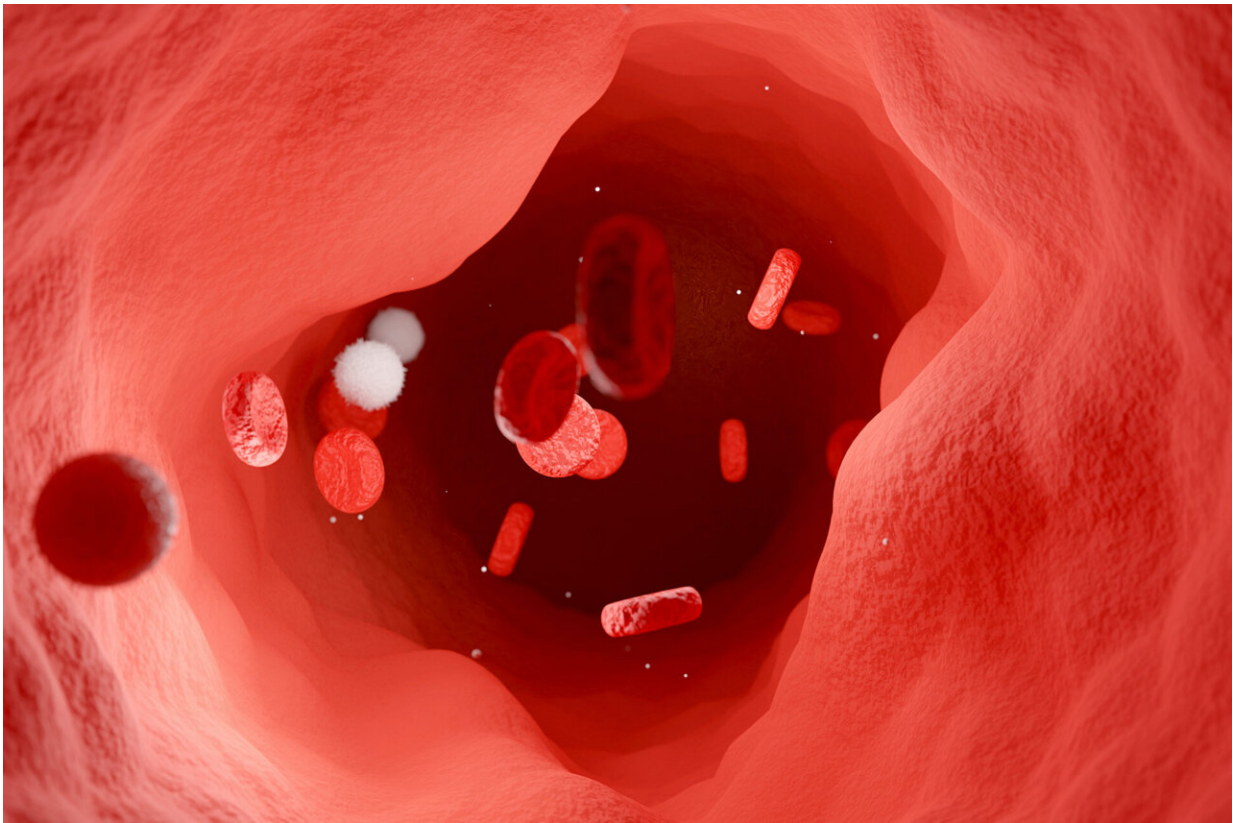


Haywire T cells attack protein in "bad" cholesterol

May 20 2022



T cells may drive inflammation as dangerous plaques build up in the cardiovascular system. Image from La Jolla Institute for Immunology. Credit: La Jolla Institute for Immunology

Preventing atherosclerosis, the underlying cause of heart disease, means

scientists need to understand how immune cells drive inflammation in the arteries.

The challenge is that the T [cells](#) involved in atherosclerosis are very rare and extremely hard to find in the bloodstream. "This is a classic needle-in-the-haystack problem," says La Jolla Institute for Immunology (LJI) Professor Klaus Ley, M.D.

But T cells can't hide forever. In a study published recently in *Nature Cardiovascular Research*, Ley and his colleagues describe a group of T cells that attack a protein called apolipoprotein B (APOB).

APOB is the main protein component of LDL, or "bad," cholesterol. Dangerous plaques can form in the arteries as LDL levels increase in the bloodstream. These plaques can drive inflammation, block blood flow, and even break apart to trigger strokes and heart attacks.

Ley and his colleagues discovered that T cells that target APOB may contribute to inflammation and further the progression of atherosclerosis. In fact, follow-up experiments in mice showed that as the disease gets worse, a phenomenon called T cell "expansion" leads to more and more of these APOB-reactive T cells in the bloodstream.

"The APOB-specific T cells become more aggressive once the disease has started," says Ley.

The new study is the first to describe the T cells involved in atherosclerosis with a high level of detail. Ley and his colleagues analyzed blood samples from eight women in a diverse cohort of women in their 50s and 60s (volunteers in the NIH-funded Women's Interagency HIV Study).

The LJI team collaborated with scientists at Albert Einstein College of

Medicine to carefully analyze more than 12,000 T cells from these patients using two cutting edge techniques: single-cell RNA sequencing and T cell receptor sequencing. In this huge pool of T cells, 110 cells stood out, and the scientists found these cells were capable of targeting APOB.

As they zoomed in further, the researchers found that the T cells targeting APOB resemble a type of T cell called a regulatory T cell (Treg), which normally regulates inflammation. Yet these T cells weren't behaving like normal Tregs. It appears that these new T cells develop a new identity as heart disease develops.

This study is good news for the future of treating heart disease. Ley says detecting these T cells may lead to diagnostics to better detect [heart disease](#)—and disease severity—through a [blood sample](#). The knowledge also brings Ley closer to developing a vaccine that dampens this dangerous immune cell activity to prevent atherosclerosis.

Going forward, Ley plans to look at a wider patient group that also includes men with atherosclerosis. He hopes to connect with more patients with [cardiovascular disease](#) and work with their doctors to collect small [blood samples](#) for clinical research. "The limiting factor in this work is access to patient samples," he says.

More information: Ryosuke Saigusa et al, Single cell transcriptomics and TCR reconstruction reveal CD4 T cell response to MHC-II-restricted APOB epitope in human cardiovascular disease, *Nature Cardiovascular Research* (2022). [DOI: 10.1038/s44161-022-00063-3](https://doi.org/10.1038/s44161-022-00063-3)

Provided by La Jolla Institute for Immunology

Citation: Haywire T cells attack protein in "bad" cholesterol (2022, May 20) retrieved 12 July 2023 from <https://medicalxpress.com/news/2022-05-haywire-cells-protein-bad-cholesterol.html>

This document is subject to copyright. Apart from any fair dealing for the purpose of private study or research, no part may be reproduced without the written permission. The content is provided for information purposes only.