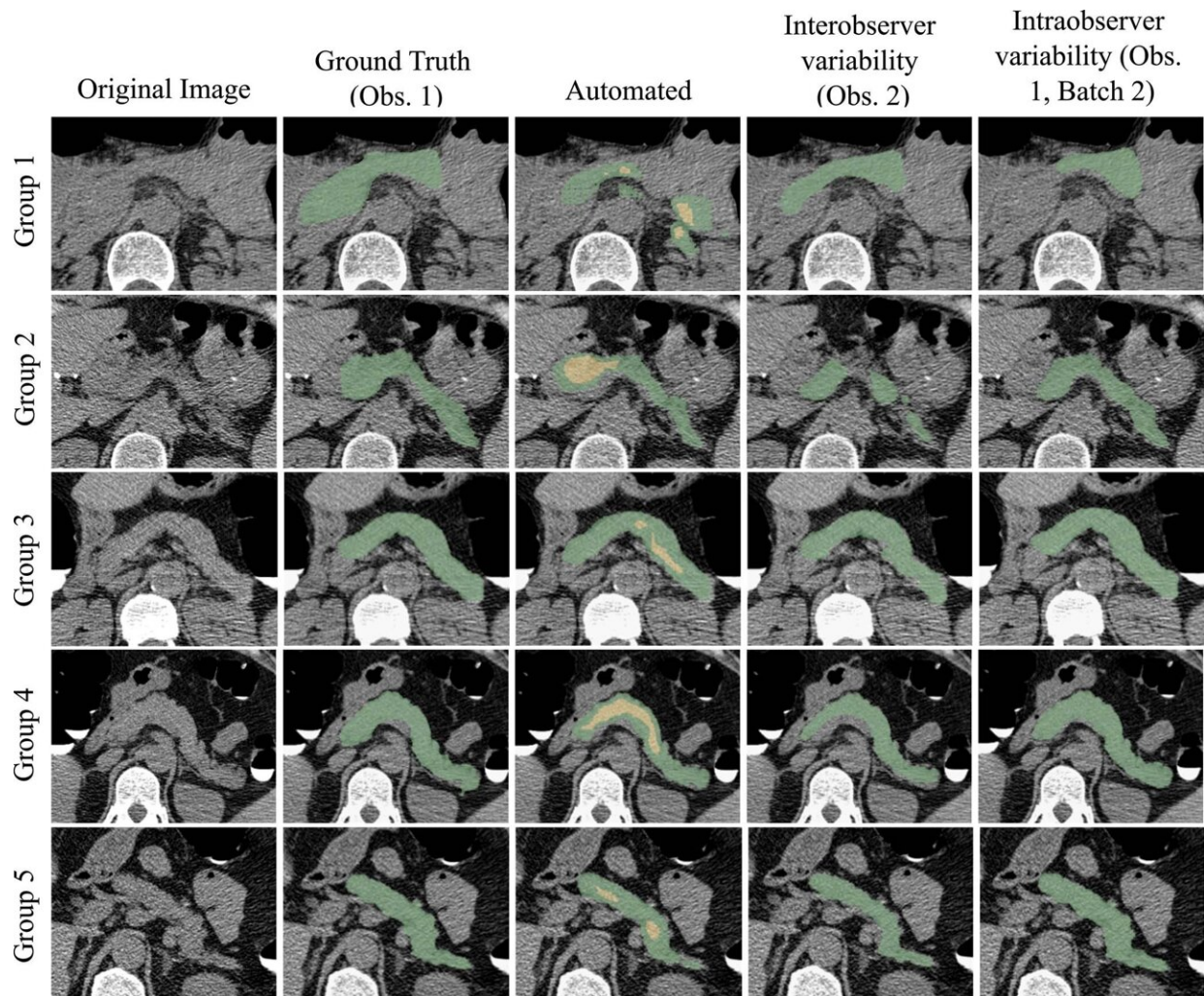


Artificial intelligence may improve diabetes diagnosis

April 5 2022



Pancreas segmentations in patients from each of the five visceral fat groups. Segmentation performance is better for patients with higher visceral fat (group 5 being the highest). Visceral fat percentages at the L1 level for the specific patients shown here were 9.81% in group 1, 13.72% in group 2, 20.19% in group

3, 27.88% in group 4, and 32.42% in group 5; Dice similarity coefficients were 0.36, 0.62, 0.78, 0.81, and 0.86, respectively. In the automated segmentation images, the green area indicates full segmentation and the yellow area indicates segmentation after erosion. Obs. = observer. Credit: Radiological Society of North America

Using a fully-automated artificial intelligence (AI) deep learning model, researchers were able to identify early signs of type 2 diabetes on abdominal CT scans, according to a new study published in the journal *Radiology*.

Type 2 [diabetes](#) affects approximately 13% of all U.S. adults and an additional 34.5% of adults meet the criteria for prediabetes. Due to the slow onset of symptoms, it is important to diagnose the disease in its early stages. Some cases of pre-diabetes can last up to 8 years and an earlier diagnosis will allow patients to make lifestyle changes to alter the progression of the disease.

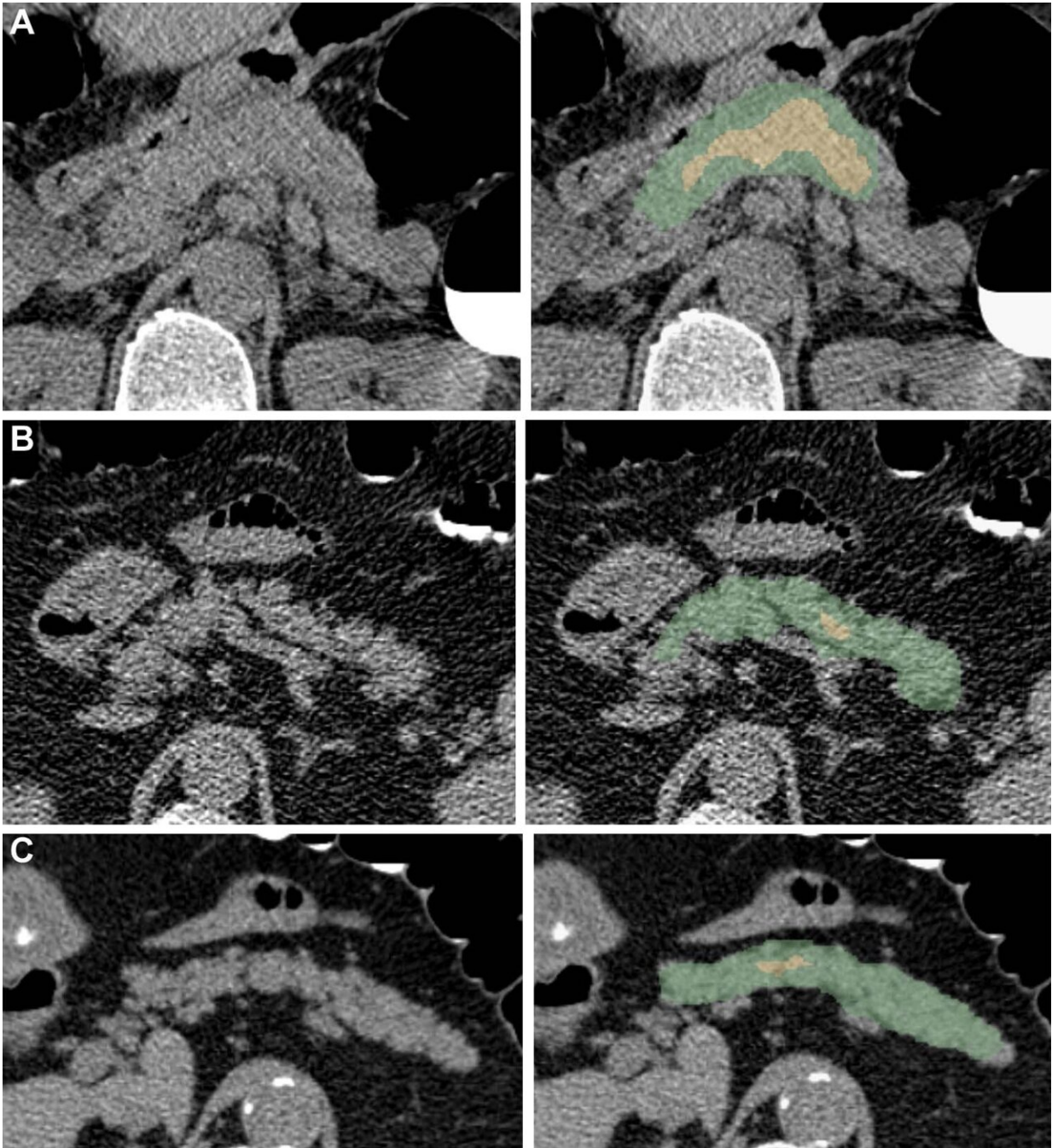
Abdominal CT imaging can be a promising tool to diagnose type 2 diabetes. CT imaging is already widely used in clinical practices, and it can provide a significant amount of information about the pancreas. Previous studies have shown that patients with diabetes tend to accumulate more [visceral fat](#) and fat within the pancreas than non-[diabetic patients](#). However, not much work has been done to study the liver, muscles and [blood vessels](#) around the pancreas, said study co-senior author Ronald M. Summers, M.D., Ph.D., senior investigator and staff radiologist at the National Institutes of Health Clinical Center in Bethesda, Maryland.

"The analysis of both pancreatic and extra-pancreatic features is a novel approach and has not been shown in previous work to our knowledge,"

said first author Hima Tallam, B.S.E., M.D./Ph.D. student.

The manual analysis of low-dose non-contrast pancreatic CT images by a radiologist or trained specialist is a time-intensive and difficult process. To address these clinical challenges, there is a need for the improvement of automated image analysis of the pancreas, the authors said.

For this retrospective study, Dr. Summers and colleagues, in close collaboration with co-senior author Perry J. Pickhardt, M.D., professor of radiology at the University of Wisconsin School of Medicine & Public Health, used a dataset of patients who had undergone routine colorectal cancer screening with CT at the University of Wisconsin Hospital and Clinics. Of the 8,992 patients who had been screened between 2004 and 2016, 572 had been diagnosed with type 2 diabetes and 1,880 with dysglycemia, a term that refers to blood sugar levels that go too low or too high. There was no overlap between diabetes and dysglycemic diagnosis.



Examples of pancreas segmentations on unenhanced axial abdominal CT images in healthy participants and patients with type 2 diabetes mellitus. Images on left are original CT images, and images on right show segmentations overlaid on the original CT images. (A) Images in a nondiabetic 61-year-old man with average pancreas CT attenuation of $35.50 \text{ HU} \pm 47.96$ and pancreatic volume of 97.6 mL. (B) Images in a 59-year-old man with type 2 diabetes who was diagnosed

144 days before CT. Average pancreas CT attenuation was $20.66 \text{ HU} \pm 81.99$ and pancreatic volume was 77.10 mL. (C) Images in a 67-year-old man with type 2 diabetes who was diagnosed 595 days after CT. Average pancreas CT attenuation was $18.46 \text{ HU} \pm 48.30$ and pancreatic volume was 72.88 mL. The green area indicates full segmentation and the yellow area indicates segmentation after erosion. Credit: Radiological Society of North America

To build the deep learning model, the researchers used a total of 471 images obtained from a variety of datasets, including the Medical Data Decathlon, The Cancer Imaging Archive and the Beyond Cranial Vault challenge. The 471 images were then divided into three subsets: 424 for training, 8 for validation and 39 for test sets. Researchers also included data from four rounds of active learning.

The deep learning model displayed excellent results, demonstrating virtually no difference compared to manual analysis. In addition to the various pancreatic features, the model also analyzed the visceral fat, density and volumes of the surrounding abdominal muscles and organs.

The results showed that patients with diabetes had lower pancreas density and higher visceral fat amounts than patients without diabetes.

"We found that diabetes was associated with the amount of fat within the pancreas and inside the patients' abdomens," Dr. Summers said. "The more fat in those two locations, the more likely the patients were to have diabetes for a longer period of time."

The best predictors of type 2 diabetes in the final model included intrapancreatic fat percentage, pancreas fractal dimension, plaque severity between the L1-L4 vertebra level, average liver CT attenuation, and BMI. The [deep learning model](#) used these predictors to accurately

discern patients with and without diabetes.

"This study is a step towards the wider use of automated methods to address clinical challenges," the authors said. "It may also inform future work investigating the reason for pancreatic changes that occur in patients with diabetes."

More information: Hima Tallam et al, Fully Automated Abdominal CT Biomarkers for Type 2 Diabetes Using Deep Learning, *Radiology* (2022). [DOI: 10.1148/radiol.211914](https://doi.org/10.1148/radiol.211914)

Provided by Radiological Society of North America

Citation: Artificial intelligence may improve diabetes diagnosis (2022, April 5) retrieved 22 July 2023 from <https://medicalxpress.com/news/2022-04-artificial-intelligence-diabetes-diagnosis.html>

This document is subject to copyright. Apart from any fair dealing for the purpose of private study or research, no part may be reproduced without the written permission. The content is provided for information purposes only.