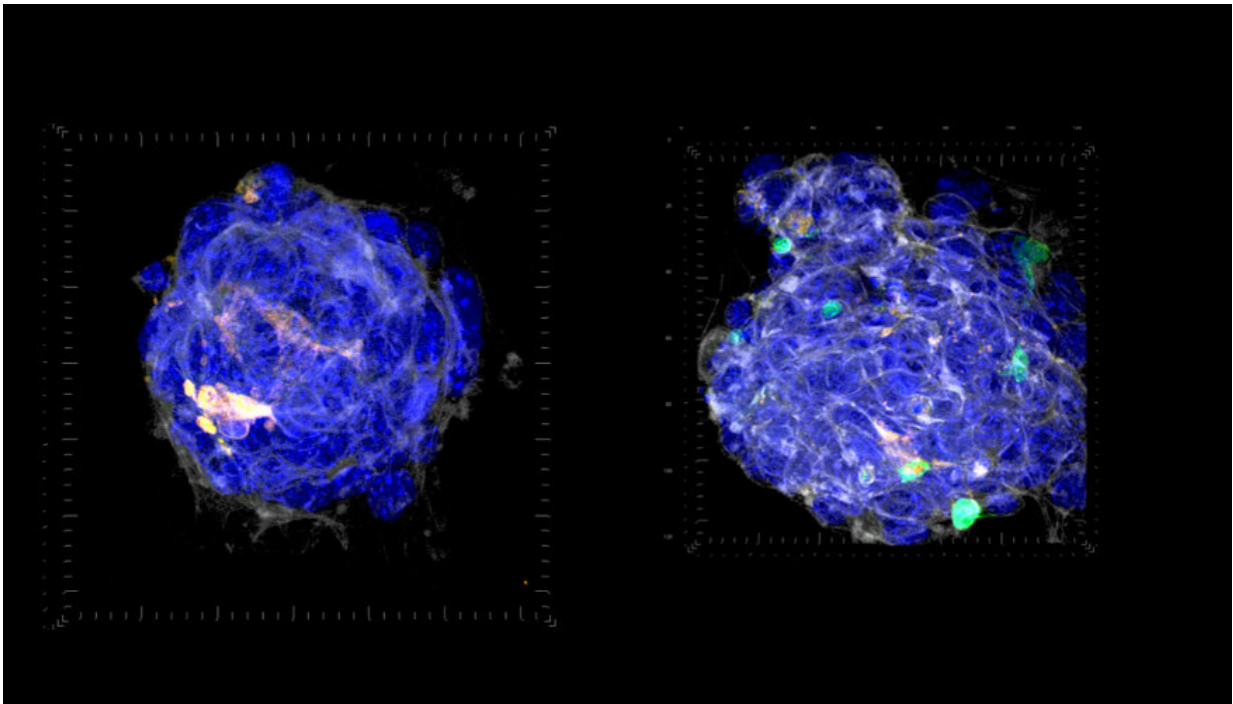


Study on tumor/immune cell interaction could impact cancer immunotherapies

March 17 2022, by Jeremy Thomas



Left: This image shows tumor and immune cells (blue for all nuclei) grown on Collagen IV. The orange spots show T-cells (immune cells) in the process of dying. Right: This image depicts tumor cells combined with living T-cells growing on a scaffolding of proteins. Credit: Monica Moya/LLNL

Lawrence Livermore National Laboratory (LLNL) scientists exploring the interaction between cancer cells and the extracellular matrix (ECM)—the "scaffolding" of organs—found that proteins in the ECM

can dramatically impact the immune system's ability to kill tumors. Researchers said the findings, published online in the journal *Biomaterials*, could represent a novel approach to studying immunosuppression found in many breast cancers and open new pathways of activating the immune system to target cancer.

In the paper, LLNL engineers and biologists report on the development of an assay for testing the efficacy of T [cells](#)—the [white blood cells](#) that in healthy persons surveil and eliminate [precancerous cells](#). But in most [breast](#) cancers, these T cells fail to do their job.

The researchers cultured [tumor](#) and immune cells on various compositions of ECM (the molecules and proteins that make up the structural support system surrounding cells). By screening 25,000 cells on 36 different combinations of nine ECM proteins, the team demonstrated, for the first time, the ability of [immune cells](#) to clear tumors is regulated by the makeup of the ECM substrate.

"The surprising thing was finding the ability of the immune cell to kill a tumor depends on what [scaffolding proteins] the tumor is sitting on," said LLNL mechanical engineer Claire Robertson, who led the work. "Depending on the ECM environment, the [tumor cells](#) were either completely susceptible and died off or they remained completely resistant to T cells."

Most notably, the team found that in the presence of Collagen IV, breast [cancer cells](#) were more likely to grow and were more resistant to T cells, whereas T cells were more likely to die off. "The T cells that were touching Collagen IV were just not doing their job," Robertson said. "In fact, we found that any time Collagen IV was in the mix, the T cells were dying instead of the tumor cells—exactly what you don't want to happen if you have a tumor."

Researchers also discovered that in Collagen IV, T cells turned off gene signatures related to killing harmful cells, whereas tumor cells turned on signatures of cytokines that send messages to T cells that there is no tumor present.

Robertson said the experimental results provide clues as to why immune checkpoint therapies like Programmed death-ligand 1 (PD-L1) inhibitors, which have improved the prognosis of various cancers, have been largely ineffective in treating breast cancer. Breast cancers rarely express PD-L1 development as biomarkers, making patients ineligible for such therapies, she explained. Importantly, tumor cells cultured on Collagen IV turned PD-L1 off, but still showed profound immunosuppression, mimicking what happens in human breast tumors, Robertson added.

"The question is, what can we do to activate the [immune system](#) in these patients? The thing that's really exciting is the fact that we've found a completely unique mechanism of immunosuppression. It means we have a whole new way of targeting cancer," she said.

The work was funded by a Laboratory Directed Research and Development Strategic Initiative (LDRD SI) on tumors and from Robertson's Lawrence Fellowship. Researchers said the pipeline they developed could apply beyond breast cancer to nearly any form of cancer.

"This research offers a new approach to identify and tease apart the critical components for understanding the biology of tumors, which may provide novel insight for more targeted cancer treatment," said co-author Matt Coleman, a Translational Immunobiology group leader in the Lab's Biosciences & Biotechnology Division.

The team's next step is to determine what drugs can target the

interactions between Collagen IV, tumor cells and T cells, with an eventual goal of developing a new therapeutic candidate capable of activating the immune system in breast [cancer](#) patients.

"In our LDRD SI, we set out to develop a 3D tumor model platform with the mindset that if you can build something, you truly understand it," said LLNL biomedical engineer Monica Moya, the Engineering lead on the project. "This work was critical to understanding both how to build systems to ensure cells behave as they would in vivo, but more fundamentally addresses a previously unknown element of T cell biology. We're proud to be using bioengineering to address urgent questions in human health."

More information: Claire Robertson et al, Extracellular matrix modulates T cell clearance of malignant cells in vitro, *Biomaterials* (2022). [DOI: 10.1016/j.biomaterials.2022.121378](https://doi.org/10.1016/j.biomaterials.2022.121378)

Provided by Lawrence Livermore National Laboratory

Citation: Study on tumor/immune cell interaction could impact cancer immunotherapies (2022, March 17) retrieved 5 February 2023 from <https://medicalxpress.com/news/2022-03-tumorimmune-cell-interaction-impact-cancer.html>

<p>This document is subject to copyright. Apart from any fair dealing for the purpose of private study or research, no part may be reproduced without the written permission. The content is provided for information purposes only.</p>
