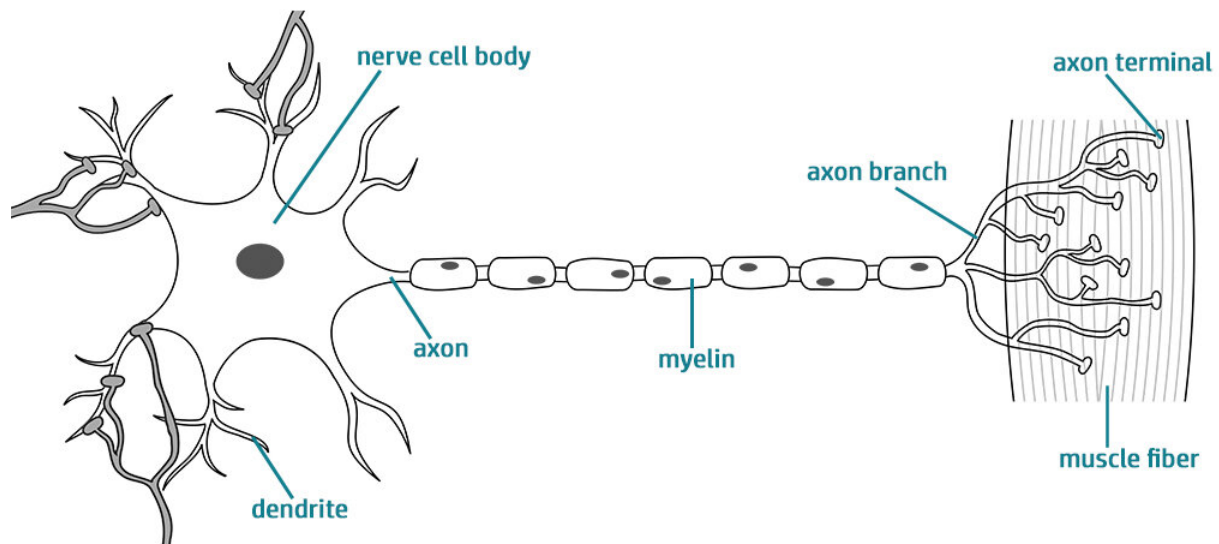


New method allows for realistic, 3D model of the neuromuscular junction

January 6 2022



A neuromuscular junction. Credit: Wikimedia Commons, Creative Commons [Attribution-ShareAlike 4.0 International](https://creativecommons.org/licenses/by-sa/4.0/) license

The neuromuscular junction—where nerves and muscle fibers meet—is an essential synapse for muscle contraction and movement. Improper function of these junctions can lead to the development of progressive neuromuscular diseases, some of which have no effective treatment (like Lou Gehrig's disease). Now, NIBIB-funded researchers have found a way to model the human neuromuscular junction by growing these

synapses in a lab, which could accelerate novel treatments for neuromuscular diseases.

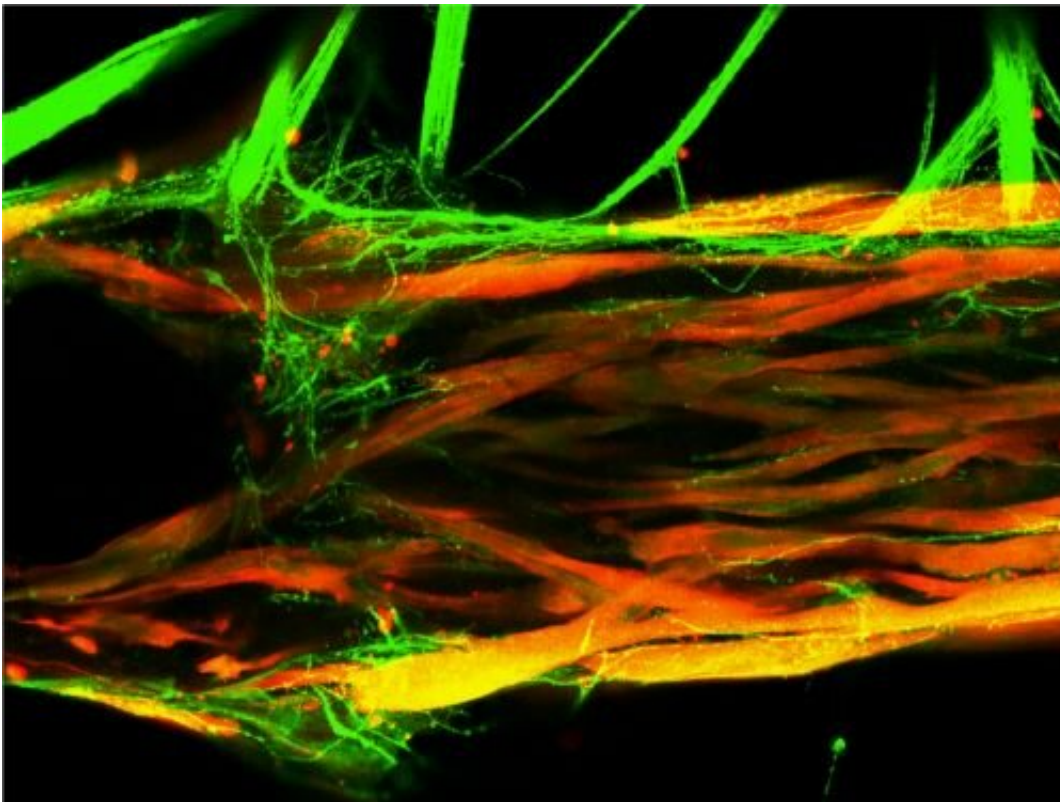
"Traditionally, studies of the [neuromuscular junction](#) rely on small animal models, but the human synapse has key differences, ultimately limiting the utility of animal studies," said David Rampulla, Ph.D., director of the division of Discovery Science & Technology at NIBIB. "Here, the study authors have developed a method to evaluate the neuromuscular junction using human 3D [tissue models](#), which enables a more accurate representation of human disease."

The neuromuscular junction is essentially comprised of two different types of [cells](#): skeletal muscle cells and a type of nerve cell called [motor neurons](#). Motor neurons are covered with [ion channels](#), which open in response to electrical signals from the brain. Once these ion channels are open, a series of cascading reactions allows the signal to reach the skeletal muscle cells, which ultimately results in muscle contraction. Therefore, in order to generate a 3D [model](#) of the human neuromuscular junction, the researchers had to acquire and grow both these types of cells. They accomplished this by either using a muscle biopsy from a donor, from which muscle cells were isolated and neuron cells were genetically derived, or by using human stem cells which were genetically modified to make both cell types.

Once they had acquired the necessary cells and grew their models, the researchers needed to find a way to measure how the neuromuscular junction was functioning. To do this, they genetically modified the motor neurons to express ion channels that open when exposed to blue light. This approach, called optogenetics, allows the researchers to precisely stimulate the motor neurons with light and then analyze the resulting muscle contractions. In this way, the researchers can directly control the neuromuscular junction and quantify changes in its function.

To fully control and monitor these photosensitive models, the researchers grew the motor neurons and muscle cells in separate but adjacent chambers, allowing axons (the thin filaments that carry nerve impulses) to "sprout" from the [neurons](#) and travel toward the muscle cells. The researchers then designed a custom optoelectronic platform to both stimulate—and film—their models. Then they could analyze how well the muscle tissues were contracting in response to stimulation (from the blue light).

"Beyond studying the healthy neuromuscular junction, our method can also be adapted for patient-specific models, to either diagnose disease, or eventually to evaluate new treatment modalities for hard-to-treat neuromuscular conditions," explained senior study author Gordana Vunjak-Novakovic, Ph.D., University Professor and Mikati Foundation Professor of Biomedical Engineering at Columbia University in New York.



A human neuromuscular junction model, where motor neurons (green) innervate a skeletal muscle tissue (red). Credit: Vunjak-Novakovic lab at Columbia University

Indeed, in their study, the researchers exposed their models to serum taken from patients with myasthenia gravis, an autoimmune disease that attacks the neuromuscular junction and causes [muscle](#) weakness. The researchers found that exposure to this serum drastically impaired the function of their human models, demonstrating that their system can be used to model human [disease](#).

"Our platform demonstrates that we can quantify the function of both healthy and diseased models of the human neuromuscular junction in an unbiased, reproducible manner," noted Vunjak-Novakovic.

"New approaches for the treatment of neurodegenerative diseases are sorely needed, as decades of research have resulted in limited therapeutic advances," said first study author Olaia F. Vila, Ph.D., who is now a scientist at Amgen in San Francisco. "We hope that our models of the human neuromuscular junction can be used in the near future to aid drug discovery and new treatments for some of these diseases."

This study was reported in *Biomaterials*.

More information: Olaia F. Vila et al, Bioengineered optogenetic model of human neuromuscular junction, *Biomaterials* (2021). [DOI: 10.1016/j.biomaterials.2021.121033](https://doi.org/10.1016/j.biomaterials.2021.121033)

Provided by National Institutes of Health

Citation: New method allows for realistic, 3D model of the neuromuscular junction (2022, January 6) retrieved 16 May 2023 from <https://medicalxpress.com/news/2022-01-method-realistic-3d-neuromuscular-junction.html>

This document is subject to copyright. Apart from any fair dealing for the purpose of private study or research, no part may be reproduced without the written permission. The content is provided for information purposes only.