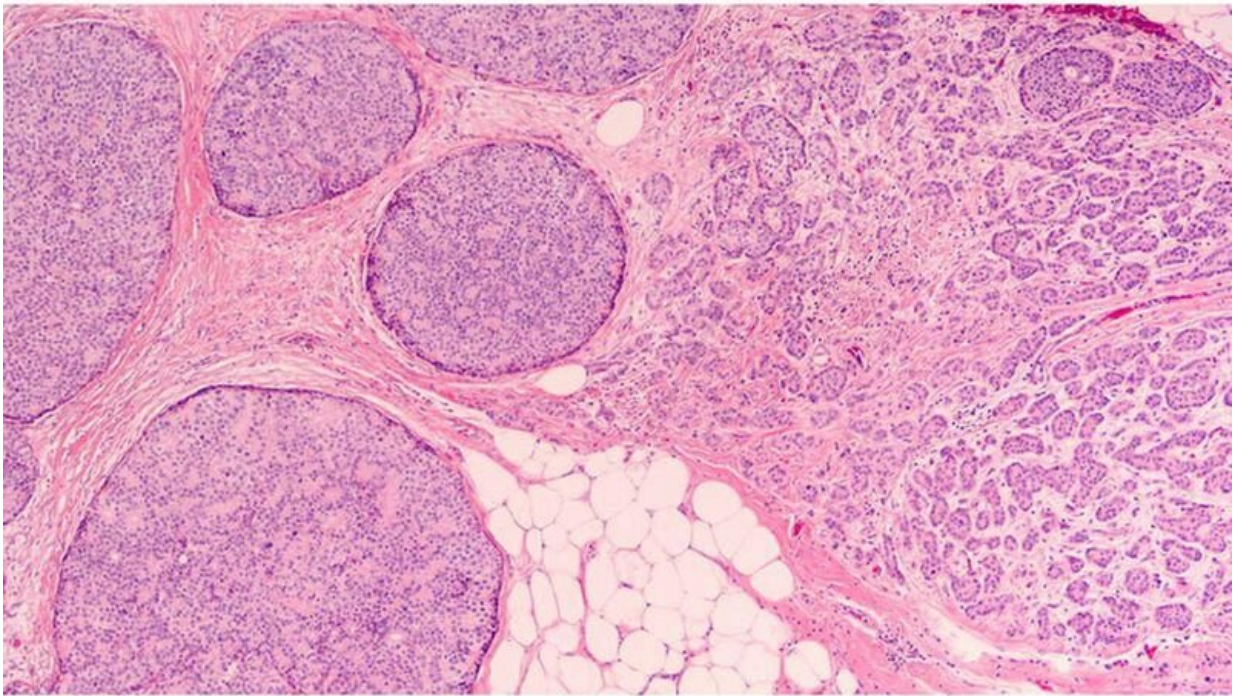


AI model enhances histologic grading of breast cancer

October 4 2021



(HealthDay)—A novel deep learning model (DeepGrade [DG])

improves prognostic stratification for Nottingham histologic grade 2 (NHG 2) breast tumors, according to a study published online Sept. 29 in the *Annals of Oncology*.

Yinxi Wang, from the Karolinska Institutet in Stockholm, and colleagues developed and validated a novel histological grade [model](#) based on digital whole-slide histopathology images (WSIs) and [deep learning](#) to improve risk stratification of NHG 2 breast cancer patients. Routine WSIs stained with hematoxylin and eosin from 1,567 patients were used for model optimization and validation. In an external test set with 1,262 patients, model generalizability was further evaluated. NHG 2 cases were stratified into two groups: DG2-high and DG2-low; the prognostic value of the model was examined.

The researchers found that in the internal test set, DG provided independent prognostic information for stratification of NHG 2 cases; compared with the DG2-low group, DG2-high showed an increased risk for recurrence after adjustment for established risk factors (hazard ratio, 2.94). DG2-low and DG2-high shared phenotypic similarities with NHG 1 and NHG 3, respectively. In the external test set, the prognostic value of DG was confirmed, with an [increased risk](#) for recurrence for DG2-high (hazard ratio, 1.91).

"The DeepGrade model provides independent prognostic stratification for NHG 2, and offers a potential cost-effective alternative to [gene expression](#) profiling, which could increase access to pathological information needed for clinical decision making in general, and for de-escalation of chemotherapy in particular," the authors write.

Several authors disclosed financial ties to the biopharmaceutical industry.

More information: [Abstract/Full Text](#)

Copyright © 2021 [HealthDay](#). All rights reserved.

Citation: AI model enhances histologic grading of breast cancer (2021, October 4) retrieved 3 March 2023 from

<https://medicalxpress.com/news/2021-10-ai-histologic-grading-breast-cancer.html>

This document is subject to copyright. Apart from any fair dealing for the purpose of private study or research, no part may be reproduced without the written permission. The content is provided for information purposes only.