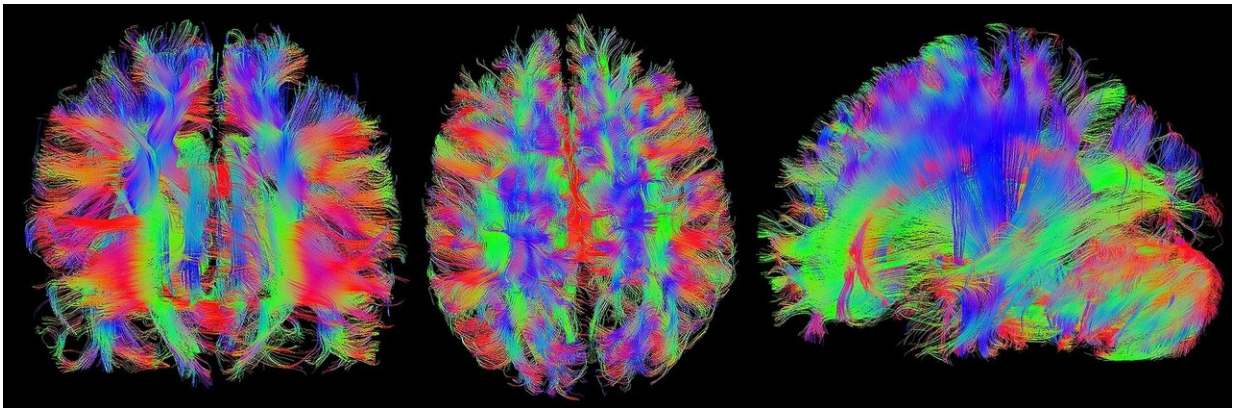


# Novel device for exploratory imaging enables about 1,000 times more access to brain tissue

September 20 2021

---



Credit: CC0 Public Domain

Science is examining the brain's neural activity for applications ranging from innovative therapies for brain-related injuries and disease to computational learning architectures for artificial intelligence and deep neural networks.

A research team has developed a tool that lets researchers see more of a live mouse's brain, to make discoveries that can advance research into the neural circuit mechanisms that form the underlying behavior of the human brain. The tool overcomes the drawback of traditional brain probes—the small amount of tissue they can access, which limits their ability to image neurons of interest.

The innovation is to insert an imaging probe with side-viewing capabilities into a previously inserted optically matched channel—an ultrathin-wall glass capillary—to convert deep brain imaging into endoscopic imaging. The operator can freely rotate the probe to image different [brain regions](#), getting a 360-degree view for imaging along the entire length of the inserted probe. This large-volume imaging enables an increase of about 1,000 times in [tissue](#) access volume, compared with what is available for imaging at the tip of typical miniature imaging probes.

The system, called COMPACT—Clear Optically Matched Panoramic Access Channel Technique—advances the use of high-resolution optical imaging in a living brain to investigate the function and adaptability of neural circuits underpinning behavior. The long-term goal is to transform the study and understanding of deep mammalian brain functions via close collaboration with neuroscientists.

The study is published in *Nature Methods*.

**More information:** Bowen Wei et al, Clear optically matched panoramic access channel technique (COMPACT) for large-volume deep brain imaging, *Nature Methods* (2021). [DOI: 10.1038/s41592-021-01230-3](#)

Provided by Purdue University

Citation: Novel device for exploratory imaging enables about 1,000 times more access to brain tissue (2021, September 20) retrieved 19 November 2023 from <https://medicalxpress.com/news/2021-09-device-exploratory-imaging-enables-access.html>

This document is subject to copyright. Apart from any fair dealing for the purpose of private

study or research, no part may be reproduced without the written permission. The content is provided for information purposes only.