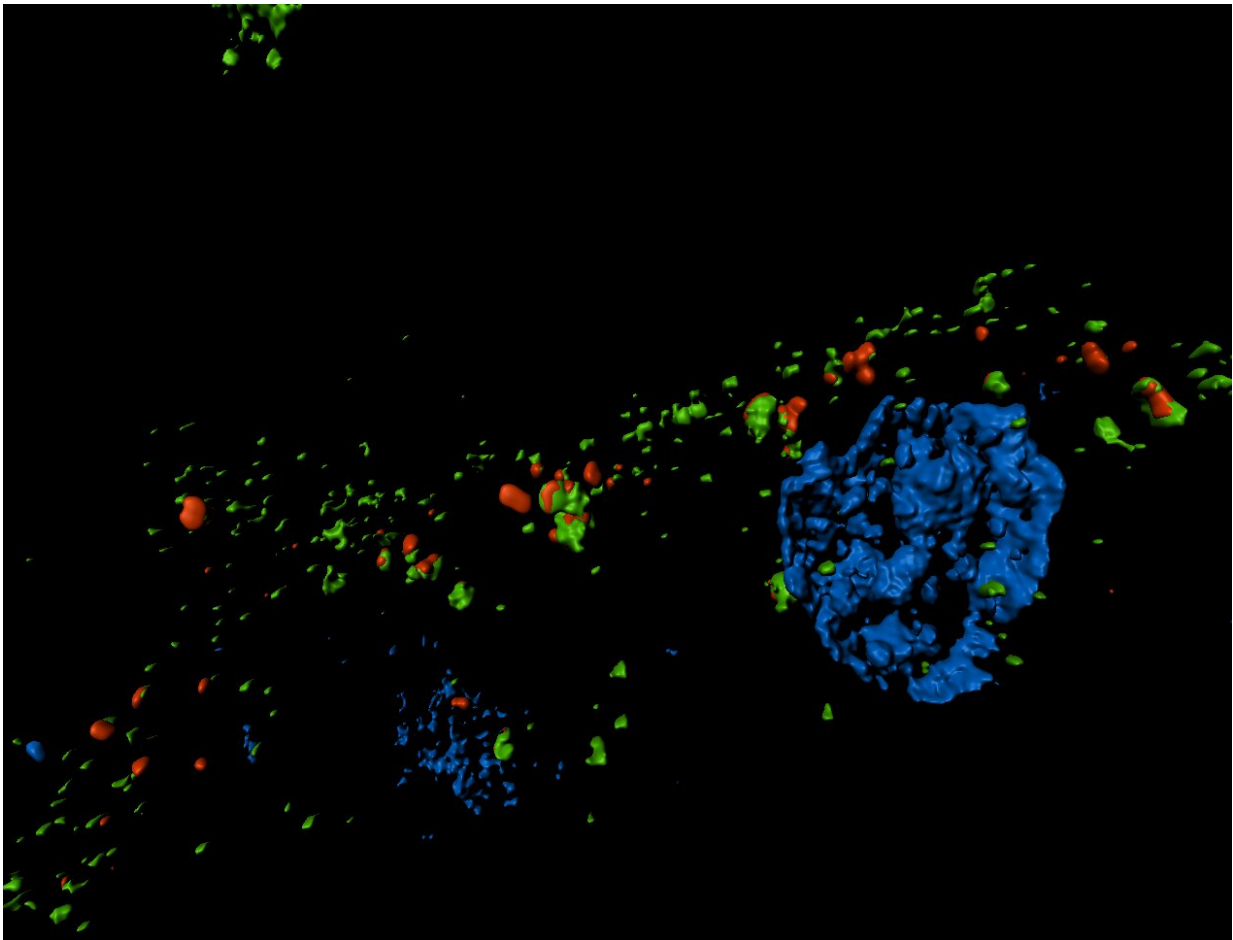


# New therapeutic targets for kidney fibrosis emerge

January 29 2019

---



During kidney fibrosis progression, target of rapamycin-autophagy spatial coupling compartments (TASCCs, shown in red and green) form, increasing the amount of secreted factors that promote fibrosis. Credit: Joe Bonventre, Brigham and Women's Hospital

Chronic kidney disease is a global health concern, affecting about 10 percent of the world's population—and increasing in prevalence. A final, common pathway in chronic kidney disease is fibrosis. Just as fibrosis—or the formation of fibrous connective tissue—can cause devastating effects in the lung, liver, heart and elsewhere, fibrosis of the kidneys can ultimately lead to end-stage kidney failure. In recent years, investigators have found that after acute kidney injury, the kidneys often fail to completely repair themselves, and kidney cells may get stuck during the cell cycle in a state in which they release profibrotic factors. A new study, published in *Science Translational Medicine*, builds upon these findings, identifying key factors involved in this cell cycle arrest and illuminating their consequences. Based on these discoveries, the research team, led by investigators at Brigham and Women's Hospital, also identifies a novel intracellular structure and new therapeutic targets for kidney fibrosis.

"As a disease mechanism, fibrosis may account for more deaths than any other," said corresponding author Joseph Bonventre, MD, Ph.D., chief of the Division of Renal Medicine at the Brigham and a faculty member of the Harvard Stem Cell Institute. "Our lab has been studying acute and chronic kidney injury and fibrosis for many years. We're now focused on the transition from acute to chronic kidney disease and what leads to fibrosis in the kidneys."

Bonventre and colleagues studied the transition from acute to chronic kidney disease in mice, using extracted [epithelial cells](#) and conducting unbiased gene expression analyses.

They found that during kidney fibrosis progression, a critical compartment formed within [kidney cells](#). The presence of the target of rapamycin-autophagy spatial coupling compartment (TASCC) increased the amount of secreted factors that promote fibrosis (TASCCs also form during liver fibrosis). In addition, the team identified a key role for

cyclin G1 (CG1), a protein involved in regulation of [cell cycle](#) arrest, to also induce the formation of TASCs. Blocking the formation of TASCs reduced the severity of kidney fibrotic disease progression in preclinical models.

The team also studied a group of patients with [chronic kidney disease](#) that had developed progressive fibrotic lesions. They found that the kidney tissue from these patients, compared to controls, had more kidney cells arrested in the G2/M phase of the cell cycle and that these cells contained TASCs. TASC-containing cells were also found in patients with [acute kidney injury](#).

The authors conclude: "We have identified a mechanism of [fibrosis](#) progression involving the induction of CG1-promoted TASC formation, which facilitates profibrotic factor secretion in cells in the G2-M phase of the cell cycle. This pathway may represent a new promising therapeutic target."

**More information:** Guillaume Canaud et al, Cyclin G1 and TASC regulate kidney epithelial cell G2-M arrest and fibrotic maladaptive repair, *Science Translational Medicine* (2019). [DOI: 10.1126/scitranslmed.aav4754](#)

Provided by Brigham and Women's Hospital

Citation: New therapeutic targets for kidney fibrosis emerge (2019, January 29) retrieved 29 January 2024 from <https://medicalxpress.com/news/2019-01-therapeutic-kidney-fibrosis-emerge.html>

This document is subject to copyright. Apart from any fair dealing for the purpose of private study or research, no part may be reproduced without the written permission. The content is provided for information purposes only.