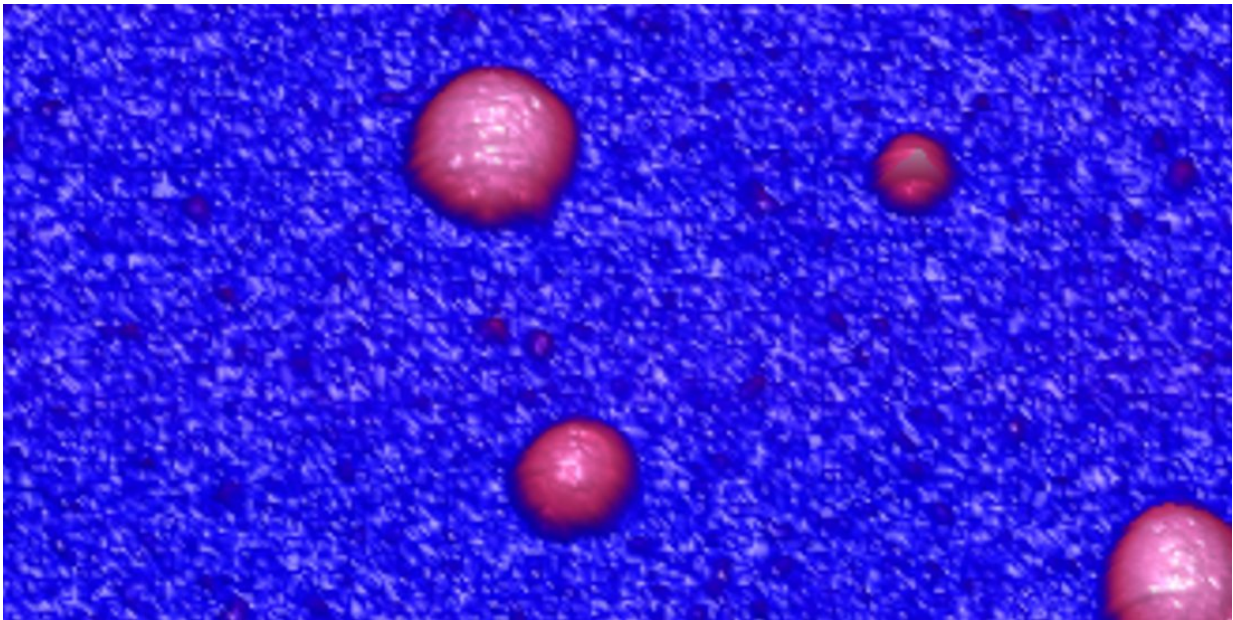


# Can nanotechnology help diagnose Alzheimer's?

October 2 2018, by Christina Benjaminsen

---



Researchers hope that the the ultrasmall messengers called exosomes (pictrure), can be used as an early-stage biomarker for Alzheimer's disease, enabling a diagnosis to be made before the typical symptoms appear. Credit: SINTEF

Exosomes are natural nanoscopic particles released by most cell types, and are currently the focus of research because they represent a possible tool for the diagnosis of Alzheimer's. These particles are not so easy to isolate, and nanotechnology may help in this process.

It is recently shown that our bodies are equipped with nanoscopic messengers called exosomes. They are present in all our bodily fluids and play a key role in the transfer of signals between our cells. It has been demonstrated that they are able to cross the brain-blood barrier, which offers great potential for the diagnosis and treatment of [neurological diseases](#).

## **Developing analytical nanotools**

In connection with the recently launched project called EXIT (EXosomes Isolation Tool), SINTEF, as part of a multidisciplinary team, will develop a miniaturised analytical tool designed to investigate exosomes in samples taken from patients with Alzheimer's disease. Exosomes carry different molecules such as proteins, microRNAs and metabolites, which makes them particularly interesting materials for research.

Key to the project are the electroseparation methods developed at the University of Leiden and at SINTEF's high-tech laboratory known as MiNaLab. MiNaLab will develop a manufacturing process for nanofluidic channels, ranging in depths from between 50 and 100 nm. (For comparison, a human hair is approximately 100,000 nanometres wide.) Such channel dimensions enable the efficient pre-concentration of nano-sized particles, such as exosomes. The exosomes in turn represent an opportunity for use in diagnostics – something that is both innovative and challenging.

The analytical tool aims to concentrate and separate exosomes from paired samples of blood plasma and spinal fluid. Researchers hope that the exosomes can be used as an early-stage biomarker for Alzheimer's disease, enabling a diagnosis to be made before the typical symptoms appear. Researchers are also hoping that the study of paired samples of plasma and [spinal fluid](#) from the same patient will improve our

understanding of the [disease](#) mechanism.

Provided by SINTEF

Citation: Can nanotechnology help diagnose Alzheimer's? (2018, October 2) retrieved 6 May 2023 from <https://medicalxpress.com/news/2018-10-nanotechnology-alzheimer.html>

This document is subject to copyright. Apart from any fair dealing for the purpose of private study or research, no part may be reproduced without the written permission. The content is provided for information purposes only.