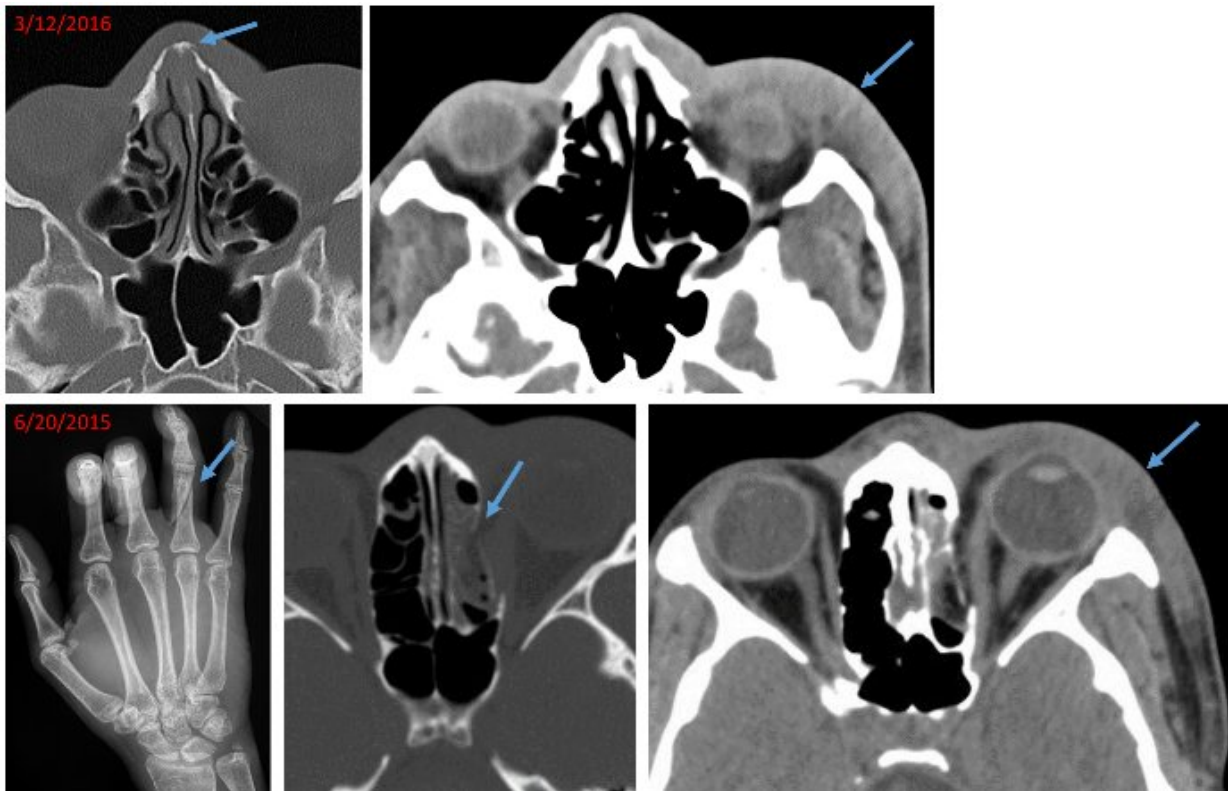


# Radiologists detect injury patterns of intimate partner violence

November 27 2017

---



Radiology images from a 21-year-old woman who presented with a chronic nasal bone fracture and soft tissue swelling of the left lateral face. Review of electronic medical records revealed that nine months ago, the patient had suffered a finger fracture, left medial orbital wall fracture and similar soft tissue swelling on the left side of the face. Traumatic findings separated in time suggest recurrent violence. Credit: Elizabeth George, Brigham and Women's Hospital

Radiology images can reveal critical clues not only about a patient's current injuries, but also about patterns of violence a person may be experiencing. Investigators from Brigham and Women's Hospital present data today at the annual meeting of the Radiological Society of North America (RSNA) from a study that reveals new ways that radiologists can be involved in the care of victims of intimate partner violence (IPV). The team found common clinical and radiologic patterns that could alert radiologists of potential IPV, to spark a conversation with the referring physician and multi-disciplinary care team to get patients the help they need.

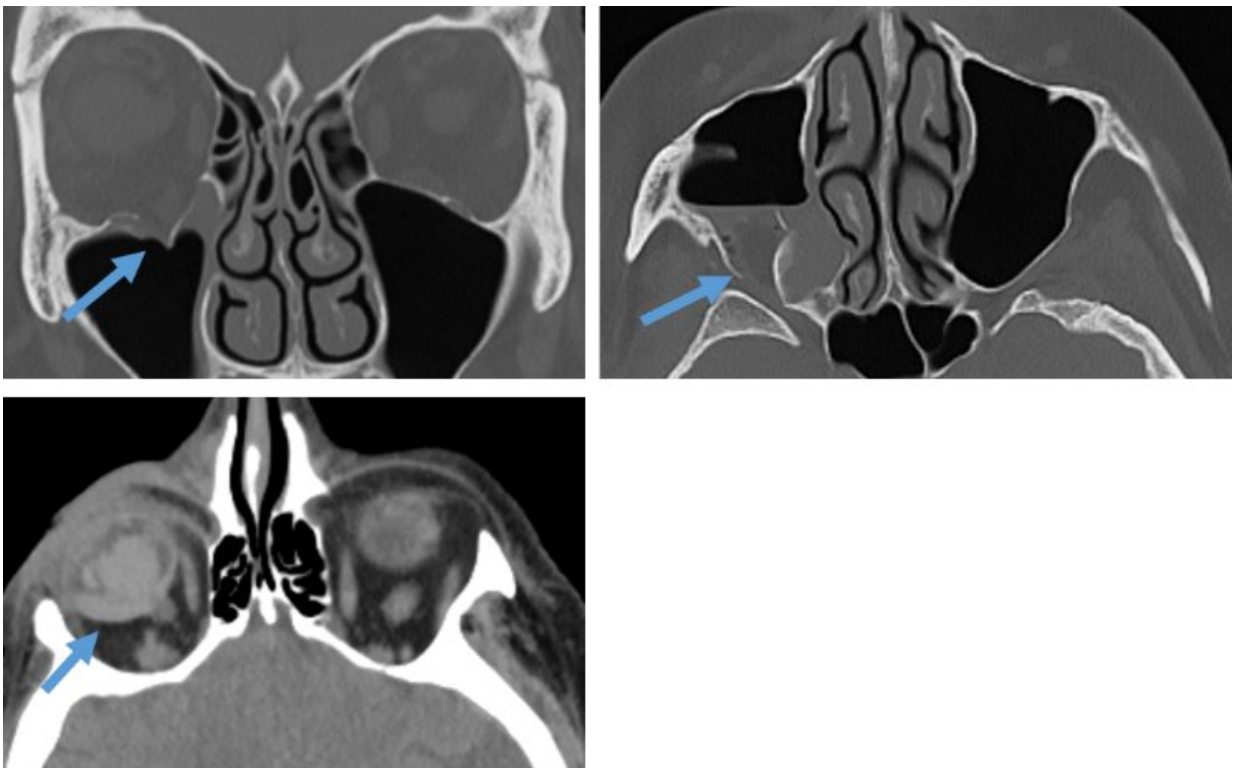
"We are recognizing new ways for radiologists to be involved in the care of victims of [intimate partner violence](#) and that there might be more information available in the radiology images, which is evident only when we are cognizant of the subtle patterns of injury," said Elizabeth George, MD, a radiology resident at BWH. "We, as radiologists, should work closely with referring physicians and can often put the pieces together as an unbiased witness."

The case that inspired the principal investigator Bharti Khurana, MD, involved a young woman who presented to the Emergency Department with an acute nasal bone fracture superimposed on an old healed fracture. While going through prior studies of the patient on the hospital's picture archiving and communication system, or PACS, she came across a recent wrist fracture. This pattern of recurrent injury made her raise the suspicion for intimate partner violence, a finding the referring physician initially had not suspected.

"This also led us to connect with some of our Emergency Department staff physicians and colleagues who were already working on the clinical and social aspects of this issue," said Khurana, Emergency Radiology fellowship program director at BWH. "We then went on to design this research study to objectively assess the clinical and radiologic findings in

this population."

The study analyzed information from 185 patients seen in the Emergency Department at BWH and referred to the hospital's Intimate Partner Violence support program between January 2015 and October 2016. The research team evaluated information on demographics, clinical presentation and history and imaging findings from studies performed in the preceding five years.



Radiology images from a 76-year-old female who presented with right sided vision loss after being punched by her husband. The patient was found to have right orbital floor and right posterolateral maxillary wall fracture as well as a right orbital hematoma. Credit: Elizabeth George, Brigham and Women's Hospital

The team found that 151 patients (81.6 percent) had a prior history of abuse, including physical, emotional or sexual abuse. Most had received radiologic examinations in the past, with a median of four exams per patient.

On evaluation, common patterns of injury emerged from the team's research. These included soft tissue injuries (swelling, hematoma or contusion) and extremity [fractures](#), often involving the distal upper extremities, suggesting injury from defensive attempts. Another commonly seen injury was facial fractures. On a clinical front, the team also identified that IPV victims often present with physical or psychologic symptoms that were not directly related to the abuse, thereby reinforcing the need for screening protocols to identify these patients. IPV victims in the study were more likely to be homeless, while the sexual assault victims often suffered from illicit drug abuse.

"The [injury](#) patterns we've found could alert the radiologists of potential IPV. Our clinical findings point toward the complex nature of these social situations and the need for a targeted intervention program not only to identify but also intervene in the various aspects of care of these [patients](#)," said Khurana.

The team presented data as well as anecdotes illustrating that radiology images may detect violence months or even years before a patient seeks help.

"Images do not lie and can sometimes tell us more than the patient in this situation," said Khurana. "In the emergency room setting, the priority is to identify acute pathologies, and hence old fractures or fracture-related deformities may not be given sufficient importance. But the presence of old and acute fractures may be pivotal in making the diagnosis of IPV."

Provided by Brigham and Women's Hospital

Citation: Radiologists detect injury patterns of intimate partner violence (2017, November 27) retrieved 15 July 2023 from <https://medicalxpress.com/news/2017-11-radiologists-injury-patterns-intimate-partner.html>

This document is subject to copyright. Apart from any fair dealing for the purpose of private study or research, no part may be reproduced without the written permission. The content is provided for information purposes only.