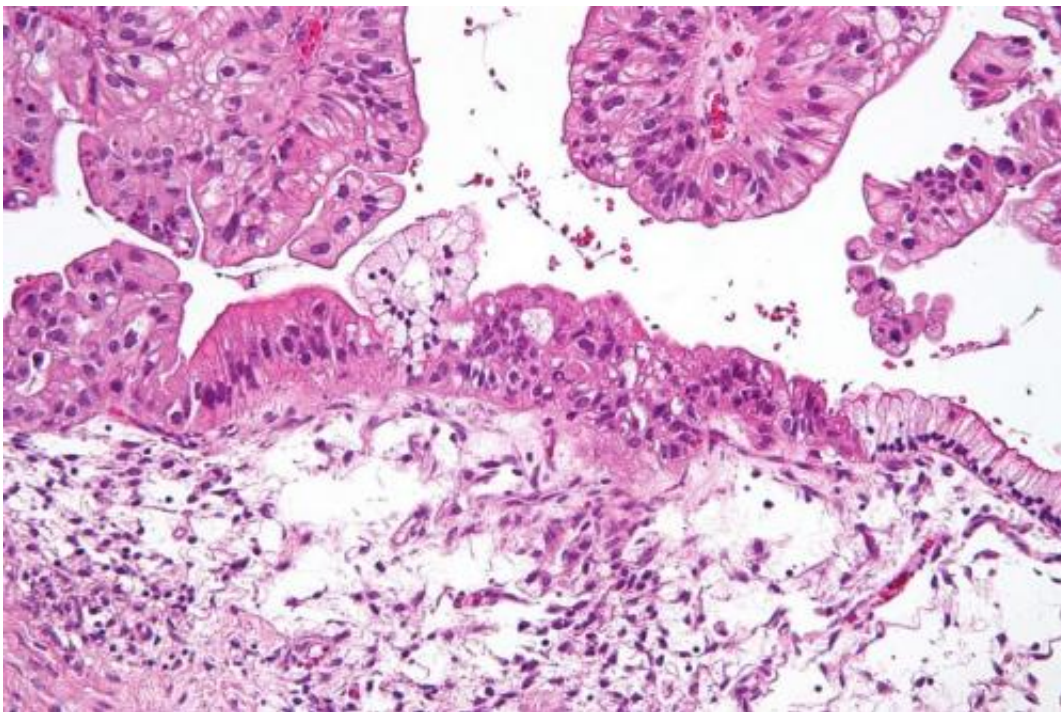


Researchers isolate possible ovarian cancer biomarkers; find that biomarker loads can vary with disease stage

September 16 2015



Intermediate magnification micrograph of a low malignant potential (LMP) mucinous ovarian tumour. H&E stain. The micrograph shows: Simple mucinous epithelium (right) and mucinous epithelium that pseudo-stratifies (left - diagnostic of a LMP tumour). Epithelium in a frond-like architecture is seen at the top of image. Credit: Nephron /Wikipedia. CC BY-SA 3.0

Researchers from North Carolina State University utilized a highly

sensitive mass spectrometry analysis to identify and measure difficult-to-detect N-glycan biomarkers associated with ovarian cancers in stages I – IV. In a surprising finding, the researchers determined that the level of biomarkers associated with ovarian cancer does not simply increase or decrease over the course of the disease, but can rise and fall during different stages. These findings have implications for our understanding of, as well as diagnostic and therapeutic approaches to, ovarian cancer.

Ovarian cancer has a high mortality rate, primarily because the disease is difficult to detect in its early stages. The majority of diagnoses – over 80 percent – occur in the late stage, and 70 percent of those cases will be fatal. Scientists know that [ovarian cancer](#) metastasis is associated with errors in glycosylation, the process by which a sugar chain attaches to a protein at a specific amino acid. The glycans, or sugar chains, affect a number of cellular processes, and it is difficult to measure differences between normal and cancer-associated glycans in order to determine whether or not they are useful as biomarkers for the disease.

David Muddiman, the Jacob and Betty Belin Distinguished Professor of Chemistry at NC State and corresponding author of a paper describing the work, along with Ph.D. candidate and lead author Elizabeth Hecht and other NC State colleagues, wanted to see if it was possible to measure differences between normal and cancer-associated glycans and identify cancer biomarkers. They obtained 164 blood samples from female patients at the Mayo Clinic: 82 from women who were diagnosed with ovarian cancer, and 82 from cancer-free female patients.

Muddiman and Hecht isolated N-glycans (glycans that attach to proteins at the amino acid asparagine) from the patients' plasma and prepared them for analysis with [mass spectrometry](#) by labeling them with hydrophobic tags specifically designed to enhance the sensitivity of the test. Their method of hydrophobic tagging, known as Individuality Normalization when Labeling with Glycan Hydrazide Tags, or

INLIGHT, makes it easier for the glycans to move into a gas phase where the mass spectrometer can "see" them better. Furthermore, by labeling the control and cancer plasma samples with two similar but chemically unique tags, highly accurate measurements could be obtained.

The mass spectrometry results were put into statistical models to determine changes in glycan levels between the control patients and those with cancer. The researchers identified seven N-glycans with different chemical compositions that were statistically significant enough to be considered possible biomarkers.

"This was the first time we had used our INLIGHT strategy with biological samples," says Hecht. "Our testing was sensitive enough to detect differences between the samples that were as low as 17 percent. Most testing can only detect two-fold changes, or a 100 percent increase. So we've been able to demonstrate that it is possible to detect and study, to a fine level of detail, a very hard-to-detect molecule – and that this molecule may be useful as a biomarker for ovarian cancer."

The researchers also found that number of cancer associated N-glycans did not remain constant over the course of the disease, but could vary from stage to stage.

"It seems that our usual and often unstated assumption about the process of disease – that what we use to measure disease progression should either consistently increase or decrease during the course of the illness – is incorrect," says Muddiman. "The molecular signature of cancer is not a one-way street."

The research appears in the *Journal of Proteome Research*.

More information: "Relative Quantification and Higher-Order

Modeling of the Plasma Glycan Cancer Burden Ratio in Ovarian Cancer Case-Control Samples" *Journal of Proteome Research*, [DOI: 10.1021/acs.jproteome.5b00703](https://doi.org/10.1021/acs.jproteome.5b00703)

Provided by North Carolina State University

Citation: Researchers isolate possible ovarian cancer biomarkers; find that biomarker loads can vary with disease stage (2015, September 16) retrieved 28 February 2023 from <https://medicalxpress.com/news/2015-09-isolate-ovarian-cancer-biomarkers-biomarker.html>

This document is subject to copyright. Apart from any fair dealing for the purpose of private study or research, no part may be reproduced without the written permission. The content is provided for information purposes only.