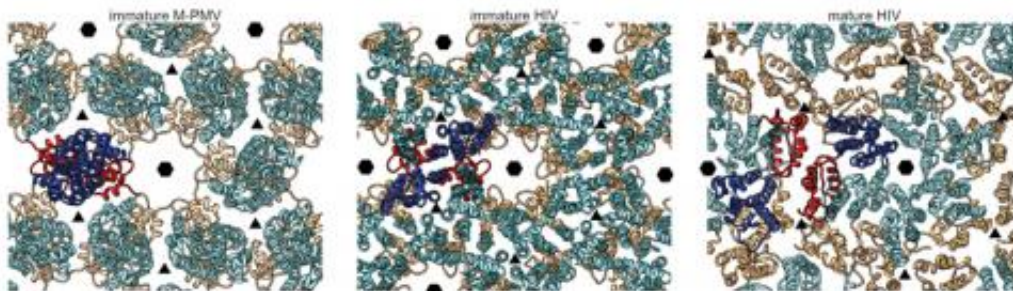


Researchers pinpoint exactly where each building block sits in HIV

November 3 2014



Surprisingly, the building blocks in immature HIV (centre) are arranged differently from those of immature Mason-Pfizer Monkey Virus (left). To form the mature virus, HIV's building blocks take on yet another arrangement (right). Credit: EMBL/F.Schur

Scientists at the European Molecular Biology Laboratory (EMBL) in Heidelberg, Germany and collaborators from Heidelberg University, in the joint Molecular Medicine Partnership Unit, have obtained the first structure of the immature form of HIV at a high enough resolution to pinpoint exactly where each building block sits in the virus. The study, published online today in *Nature*, reveals that the building blocks of the immature form of HIV are arranged in a surprising way.

"The structure is definitely different from what we'd expected," says John Briggs from EMBL, who led the work. "We assumed that retroviruses like HIV and Mason-Pfizer Monkey Virus would have

similar structures, because they use such similar building blocks, but it turns out that their immature forms are surprisingly different from each other. At this point, we don't really know why."

Briggs and colleagues used cryo-electron microscopy to study the protein lattice that surrounds the virus' genetic material. After infecting one of the cells in our immune system, HIV replicates, producing more copies of itself, each of which has to be assembled from a medley of viral and cellular components into an immature virus. This is the form that leaves the cell. The protein [building blocks](#) that make up the virus are then rearranged into the virus' mature form, which can infect other cells.

The first cryo-electron microscopy images of immature HIV, obtained at EMBL in the 1990s, surprised researchers by showing that the virus did not have a regular symmetrical structure, as had been assumed. That meant it was going to be difficult to get a detailed picture of the structure of its protein lattice. Two decades on, by optimising both how data is collected at the microscope and how it is analysed, Florian Schur, a PhD student in Briggs' lab, has now achieved an unprecedentedly detailed structure.

With this structure in hand, scientists have a basis to probe further. They can use it to decide where to focus efforts for achieving the even greater detail needed to explore potential drug targets, for instance. It will also enable researchers to understand how mutations might influence how the virus assembles. And the techniques themselves can be applied to a variety of questions.

"This approach offers so many possibilities," says Schur. "You can look at other viruses, of course, but also at complexes and proteins inside cells, with a whole new level of detail."

In future, the EMBL scientists will use the approach to look at other

viruses and at the vesicles that transport material inside cells. They also aim to push the techniques even further, to allow them to see other parts of the viral proteins that are currently beyond their reach, but which they suspect play an important role in HIV maturation.

"In the long term, we'd also like to investigate how drugs which are known to inhibit [virus](#) assembly and maturation actually work," Briggs concludes.

More information: Schur, F.K.M., Hagen, W.J.H., Rumlová, M., Ruml, T., Müller, B., Kräusslich, H. & Briggs, J.A.G. "The structure of the immature HIV-1 capsid in intact virus particles at 8.8 Å resolution." Published online in *Nature*, 2 November 2014. [DOI: 10.1038/nature13838](#).

Provided by European Molecular Biology Laboratory

Citation: Researchers pinpoint exactly where each building block sits in HIV (2014, November 3) retrieved 30 January 2023 from <https://medicalxpress.com/news/2014-11-block-hiv.html>

<p>This document is subject to copyright. Apart from any fair dealing for the purpose of private study or research, no part may be reproduced without the written permission. The content is provided for information purposes only.</p>
--