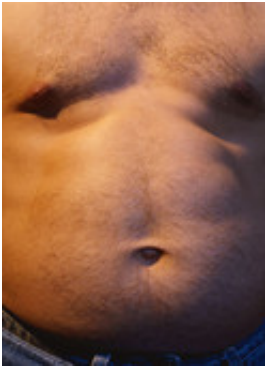


## In CAD, highest mortality risk for central obesity, normal BMI

January 29 2013

---



For individuals with coronary artery disease, central obesity in combination with normal weight is associated with the highest risk of mortality, according to research published in the Feb. 5 issue of the *Journal of the American College of Cardiology*.

(HealthDay)—For individuals with coronary artery disease (CAD), central obesity in combination with normal weight is associated with the highest risk of mortality, according to research published in the Feb. 5 issue of the *Journal of the American College of Cardiology*.

Thais Coutinho, M.D., of the Mayo Clinic in Rochester, Minn., and colleagues used data for 15,547 participants with CAD in five studies from three continents to evaluate [mortality risk](#) based on measurement of both [body mass index](#) (BMI) and central obesity.

During a median follow-up of 4.7 years, the researchers identified 4,699 deaths. The worst long-term survival was observed in people of normal weight who displayed central obesity: a person with a BMI of 22 kg/m<sup>2</sup> who had a waist-to-hip ratio (WHR) of 0.98 had significantly higher mortality than a person with a similar BMI and a WHR of 0.89 (hazard ratio, 1.10); they also had significantly higher mortality than a person with a BMI of 30 kg/m<sup>2</sup> and WHR of 0.89 or 0.98 (hazard ratios, 1.61 and 1.27, respectively).

"When used alone, BMI is a misleading anthropometric measurement in patients with CAD, and although measures of central obesity predict mortality more reliably than BMI, our findings indicate that combining BMI and measures of central obesity in the assessment of mortality risk in CAD patients is superior to documenting BMI alone, and may redefine current practice," the authors write.

Several authors disclosed [financial ties](#) to the pharmaceutical industry.

**More information:** [Abstract](#)  
[Full Text](#)

[Health News](#) Copyright © 2013 [HealthDay](#). All rights reserved.

Citation: In CAD, highest mortality risk for central obesity, normal BMI (2013, January 29) retrieved 10 May 2024 from <https://medicalxpress.com/news/2013-01-cad-highest-mortality-central-obesity.html>

<p>This document is subject to copyright. Apart from any fair dealing for the purpose of private study or research, no part may be reproduced without the written permission. The content is provided for information purposes only.</p>
--